

**Single phase oil-immersed  
100kVA, 27,5/0.4, Ii 0**

Drawing No. **REL 100-27,5**

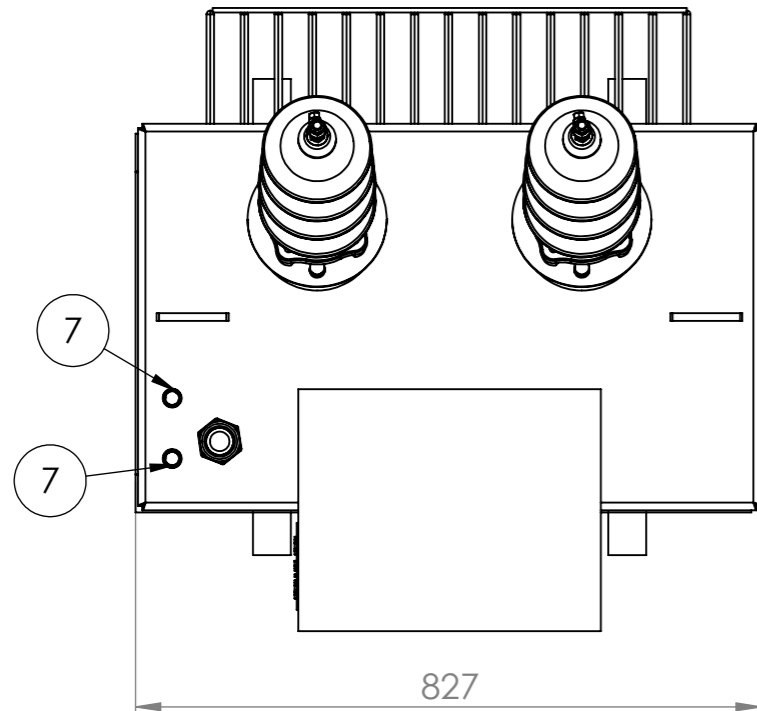
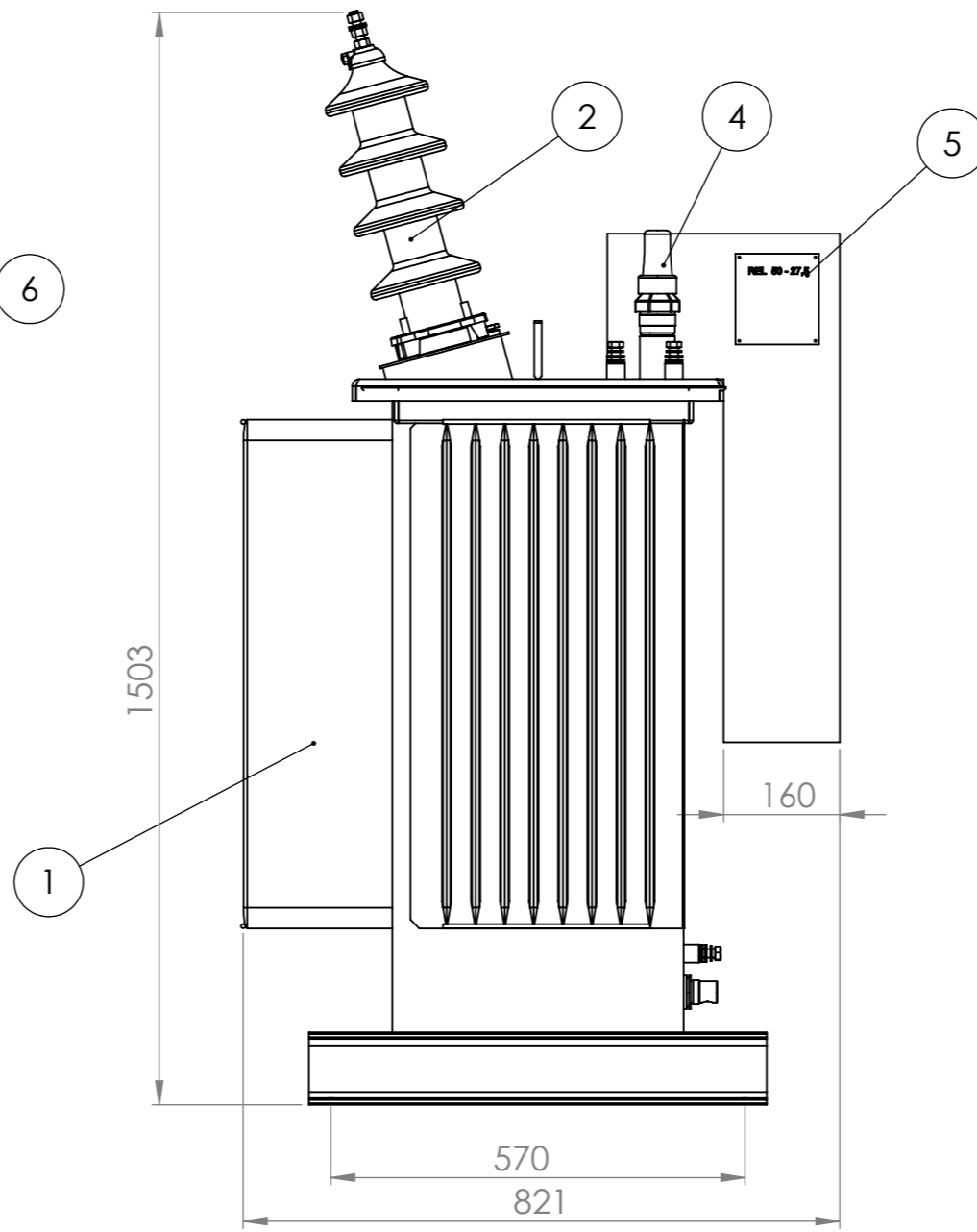
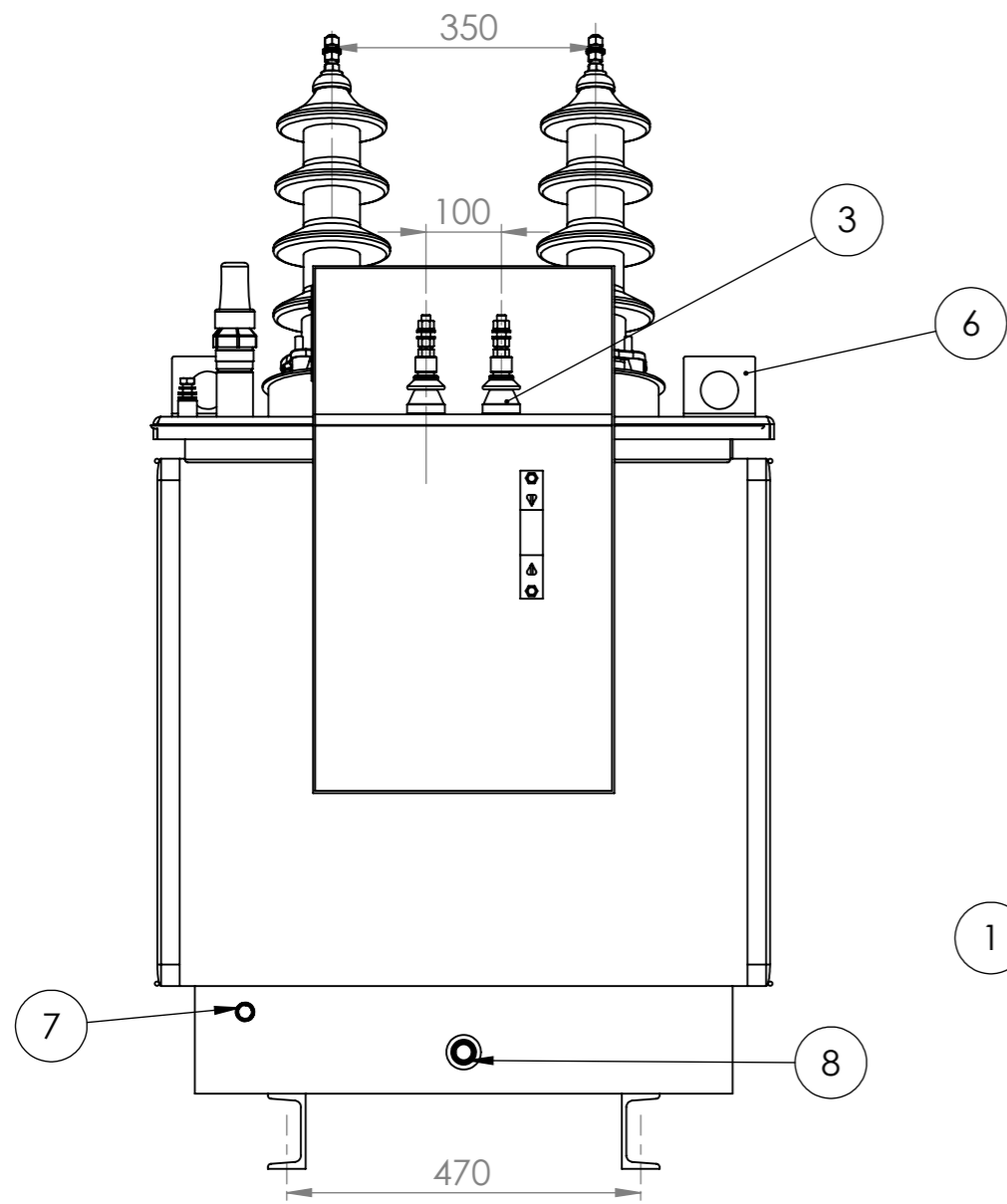
Original

Copy

Page of

**TECHNICAL DATA**

Manufacturer		<b>LEMI TRAF0, Pernik</b>	
Transformer type		<b>REL 100-27,5</b>	
Transformer kind		<b>Hermetically sealed</b>	
Standard		<b>IEC 60076</b>	
<b>Electrical characteristics and guaranteed values</b>			
1.	Rated power	[kVA]	<b>100</b>
2.	Number of phases		<b>1</b>
3.	Rated frequency	[Hz]	<b>50</b>
4.	Highest voltage level of the equipment	[kV]	<b>27.5</b>
5.	Rated insulating level	[kV]	<b>LI70 AC70 / LI0 AC3</b>
6.	Rated primary voltage	[kV]	<b>25</b>
7.	Rated secondary voltage	[kV]	<b>0.4</b>
8.	Regulation		<b>NA</b>
9.	Tapping range	[%]	<b>NA</b>
10.	Connection symbol		<b>Ii 0</b>
11.	No-load losses	[W]	<b>225</b>
12.	Load losses at 75 °C	[W]	<b>1475</b>
13.	Impedance voltage at 75 °C	[%]	<b>4</b>
14.			
<b>Temperature rises, conditions of use and installation</b>			
15.	Maximal ambient temperature	[C]	<b>40</b>
16.	Maximal temperature rise of conductor material	[K]	<b>65</b>
17.	Maximal temperature rise of oil	[K]	<b>60</b>
18.	Thermal class of insulation		<b>A</b>
19.	Type of cooling		<b>ONAN</b>
20.	Installation height (above sea level)	[m]	<b>&lt;1000</b>
21.	Type of terminal connection		<b>HV : DIN 42531 LV : DIN 42530</b>
22.	Place of installation		<b>Outdoor/Pole mounted</b>
<b>Maximal dimensions and masses</b>			
23.	Maximal dimensions of the transformer:		
	a) length	[mm]	<b>827</b>
	b) wide	[mm]	<b>821</b>
	c) height	[mm]	<b>1503</b>
24.	Approximate mass of the transformer oil	[kg]	<b>180</b>
25.	Approximate mass of the transformer	[kg]	<b>790</b>



Pos.	Description	Notes
1	Tank	
2	HV Bushing	
3	LV Bushing	
4	Oil level indikator	
5	Rating plate	
6	Lifters	
7	Earthing bosses	
8	Oil drain device	