

COMPRESSION JOINTS FOR Bz AND StCu WIRES

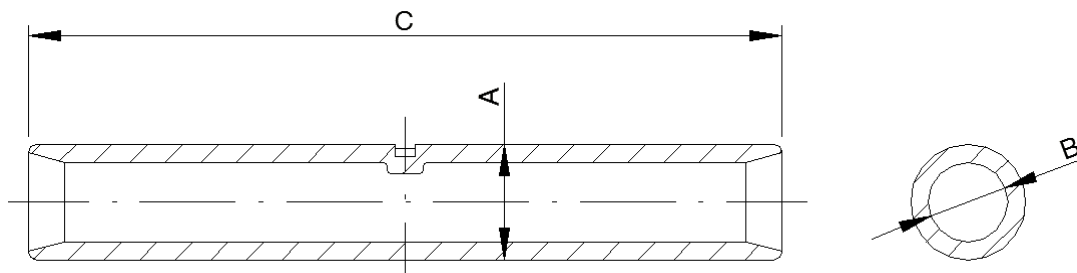
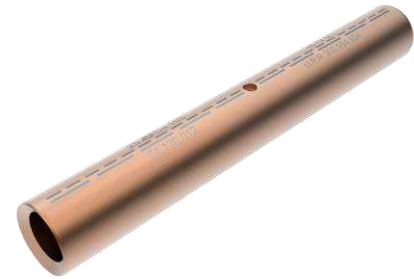
These compression joints are used to form a full-tension connection between Bronze and Steel Copper wires.

Application:

- Compression joint
- For Bz I-II and Staku I-III wires

Material:

- CuNiSi



No.	Type of device *)	Conductor Cross section (mm ²)	Dimensions			Compression die				
			A (mm)	B (mm)	C (mm)	Tool Code **)	No. of comp.	Width (mm)	Comp. force (kN)	Comp. die part No.
300 293 293 *)	a	25	13,5	6,3	110	13	3-3	14	240	300.608.004
300 294 294 *)	b	35	15,5	7,5	110	15	3-3	14	240	300.608.006
300 295 295 *)	c	50	17,5	9,0	110	17	3-3	14	240	300.608.008
300 296 296 *)	d	70	20	10,5	110	19	3-3	14	240	300.608.010
300 297 297 *)	e	95	21	12,5	142	21	4-4	14	240	300.608.012
303 801 801 *)	f	120	24	14,0	140	23	4-4	14	240	300.608.015

*) DB-Approval drawing Ebs 07.42.24

**) according DIN 48083 part IV

Suitable compression head: e.g. Size III, item no. 305.678.009

Suitable electrical hydraulic compression pump: e.g. EHP 850 bar, item no. 305.853.012

Suitable foot operated hydraulic compression pump: e.g. FP 850 bar, item no. 305.799.002

Wire Joints

COMPRESSION JOINTS FOR Cu WIRES

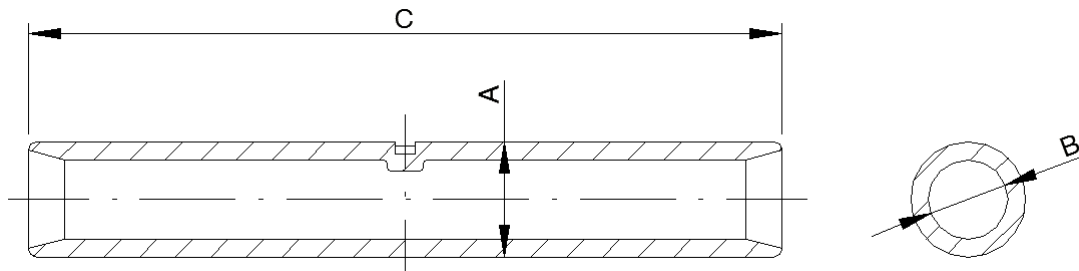
These compression joints are used to form a full-tension connection of copper wires.

Application:

- Compression joint
- For Cu messenger wires, DIN 48201

Material:

- Cu-ETP



No.	Type of device *)	Conductor cross section (mm ²)	Dimensions			Compression die				
			A (mm)	B (mm)	C (mm)	Tool code **)	Comp. No./width	Comp. No./width	Comp. force man. / hydr. (kN)	Comp. die part No. man. / hydr.
305 573 002 *)	a	25	10,2	7	80	10	5-5 / 5	-	60 / -	300 438 443
300 950 950 *)	b	50	14,5	10	95	14	6-6 / 5	-	60 / -	300 438 447
300 951 001 *)	c	70	16,5	11,5	95	16	6-6 / 5	-	60 / -	300 438 448
305 513 002 *)	d	95	21	14	145	20	8-8 / 5	4-4 / 14	60 / 240	300 438 451 / 300 608 011
300 953 953 *)	e	120	23	15	160	22	8-8 / 5	4-4 / 14	60 / 240	300 438 452 / 300 608 014
300 954 954		150/153	25	17	182	25	12-12 / 5	4-4 / 14	60 / 240	300 438 453 / 300 608 016
300 955 001		182/185	30	18,5	260	30	-	5-5 / 14	- / 240	300 608 019
300 956 001		240/242	34,5	21,5	310	34	-	6-6 / 14	- / 240	300 608 021

*) DB-Approval drawing Ebs 20.01.17

**) according DIN 48083 part IV

Suitable compression head: e.g. Size III, item no. 305.678.009,

Suitable manual compression tool: e.g. Type GO6, item no. 303 871 003

Suitable electrical hydraulic compression pump: e.g. EHP 850 bar, item no. 305.853.012

Suitable foot operated hydraulic compression pump: e.g. FP 850 bar, item no. 305.799.002

COMPRESSION JOINTS FOR A1St WIRES

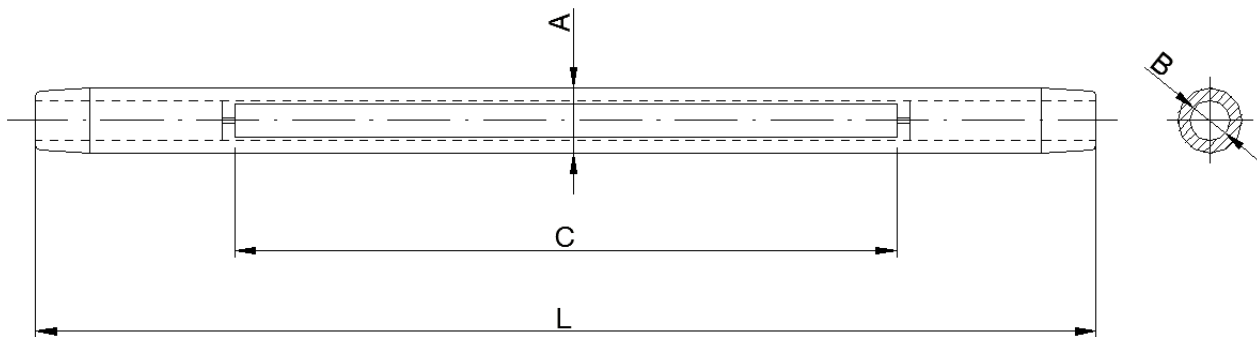
The compression joints comprise of an inner steel sleeve combined with an outer aluminium sleeve. The joints are used for a full-tension connection of Aluminium/Steel cables.

Application:

- Full tension connection
- For steel reinforced aluminium conductors acc. EN 50182 Type AL1/ST1A

Material:

- Aluminium (EN AW-1050A)
- Steel sleeve S355J2 (tZn)



A = Outer diameter aluminium sleeve

B = Outer diameter steel sleeve

No.	Type of device *)	Conductor cross section (mm ²)	Dimensions				Compression die Alu			Compression die Steel		
			A (mm)	B (mm)	C (mm)	L (mm)	Tool Code **)	No. of Comp.	Item No.	Tool Code **)	No. of Comp.	Item No.
305 231 004		48-AL1/8-ST1A	16	7,5	95	280	16	9-9	300 608 007	7	6-6	300 512 514 ***)
305 231 011 *)	c	184-AL1/30-ST1A	30,5	15	140	435	30	6-6	300 608 019	15	4-4	300 608 006
305 231 015 *)	d	243-AL1/39-ST1A alt. ACSR "HAWK"	34,5	15	140	480	34	7-7	300 608 021	15	4-4	300 608 006
305 231 016		264-AL1/34-ST1A	38,5	15	140	525	38	8-8	300 608 022	15	4-4	300 608 006

*) DB-Approval drawing Ebs 20.01.18

**) according DIN 48083 part IV

Suitable compression head: e.g. Size III, item no. 305.678.009

***) Suitable manual compression tool: e.g. Type GO6, item no. 303 871 003

Suitable electrical hydraulic compression pump: e.g. EHP 850 bar, item no. 305.853.012

Suitable foot operated hydraulic compression pump: e.g. FP 850 bar, item no. 305.799.002

Compression joints for other wire sizes are available on request.